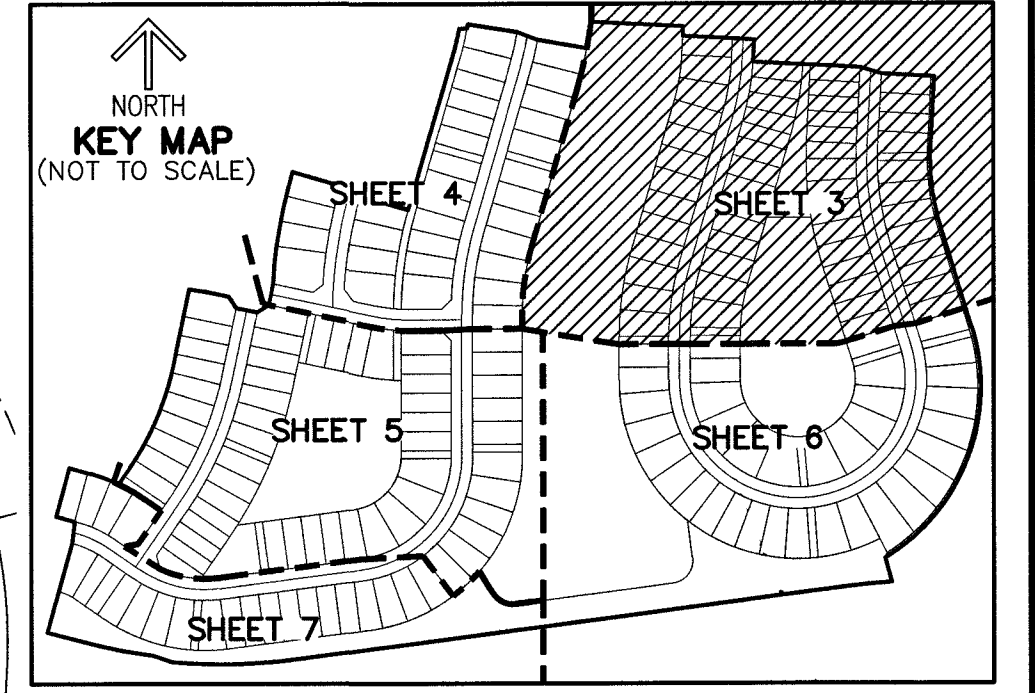
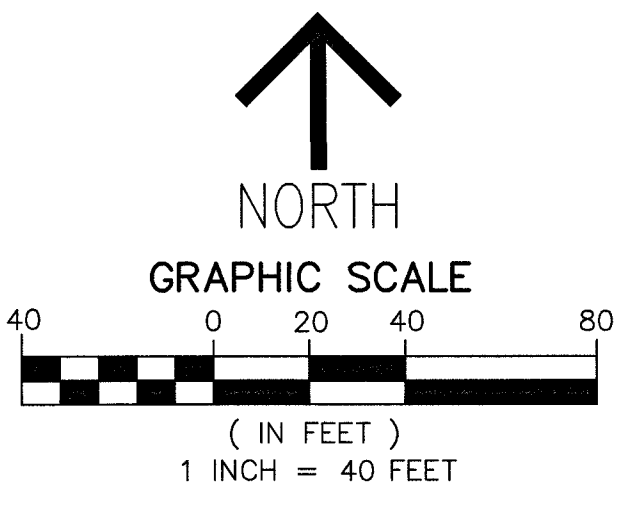


CRESSWIND PALM BEACH PHASE 5

A PORTION OF SECTIONS 6 AND 7, TOWNSHIP 43 SOUTH, RANGE 41 EAST,
CITY OF WESTLAKE, PALM BEACH COUNTY, FLORIDA.

THIS INSTRUMENT PREPARED BY
DAVID P. LINDLEY
OF
CAULFIELD & WHEELER, INC.
SURVEYORS - ENGINEERS - PLANNERS
7900 GLADES ROAD, SUITE 100
BOCA RATON, FLORIDA 33434 - (561)392-1991
CERTIFICATE OF AUTHORIZATION NO. LB3591

NOTES
COORDINATES, BEARINGS AND DISTANCES
COORDINATES SHOWN ARE GRID
DATUM = NAD 83 (2007 ADJUSTMENT)
ZONE = FLORIDA EAST
LINEAR UNIT = US SURVEY FEET
COORDINATE SYSTEM 1983 STATE PLANE
TRANSVERSE MERCATOR PROJECTION
ALL DISTANCES ARE GROUND
SCALE FACTOR = 1.0000017
GROUND DISTANCE X SCALE FACTOR = GRID DISTANCE
BEARINGS AS SHOWN HEREON ARE GRID DATUM,
NAD 83 (2007 ADJUSTMENT), FLORIDA EAST ZONE.



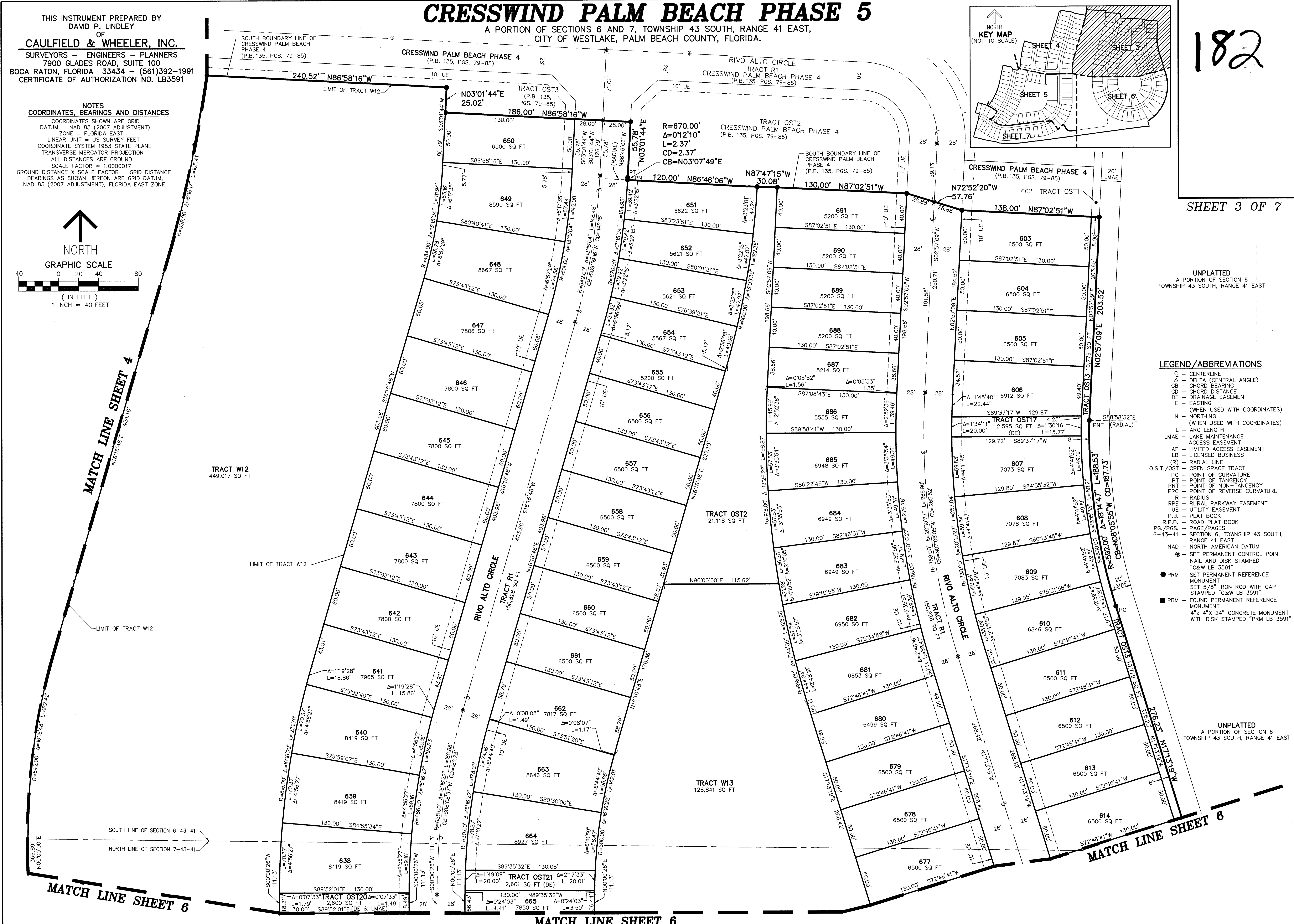
182

SHEET 3 OF 7

LEGEND / ABBREVIATIONS

- ⊙ - CENTERLINE
- Δ - DELTA (CENTRAL ANGLE)
- CB - CHORD BEARING
- CD - CHORD DISTANCE
- DE - DRAINAGE EASEMENT
- E - EASTING
- (WHEN USED WITH COORDINATES)
- N - NORTHING
- (WHEN USED WITH COORDINATES)
- L - ARC LENGTH
- LMAE - LAKE MAINTENANCE ACCESS EASEMENT
- LAE - LIMITED ACCESS EASEMENT
- LB - LICENSED BUSINESS
- (S) - RADIAL LINE
- O.S.T./OST - OPEN SPACE TRACT
- PC - POINT OF CURVATURE
- PT - POINT OF TANGENCY
- PNT - POINT OF NON-TANGENCY
- PRC - POINT OF REVERSE CURVATURE
- R - RADIUS
- RPE - RURAL PARKWAY EASEMENT
- UE - UTILITY EASEMENT
- P.B. - PLAT BOOK
- R.P.B. - ROAD PLAT BOOK
- PG./PGS. - PAGE/PAGES
- 6-43-41 - SECTION 6, TOWNSHIP 43 SOUTH, RANGE 41 EAST
- NAD - NORTH AMERICAN DATUM
- ⊙ - SET PERMANENT CONTROL POINT NAIL AND DISK STAMPED "C&W LB 3591"
- - PRM - SET PERMANENT REFERENCE MONUMENT SET 5/8" IRON ROD WITH CAP STAMPED "C&W LB 3591"
- - PRM - FOUND PERMANENT REFERENCE MONUMENT 4" X 4" X 24" CONCRETE MONUMENT WITH DISK STAMPED "PRM LB 3591"

UNPLATTED
A PORTION OF SECTION 6
TOWNSHIP 43 SOUTH, RANGE 41 EAST



MATCH LINE SHEET 4

MATCH LINE SHEET 6

MATCH LINE SHEET 6

MATCH LINE SHEET 6